

Custom List Reports

The MetroCount tube-based and piezo-based systems record the precise time each vehicle axle touches their sensors. From this data, the MTE® software can later extract information such as axle spacings, speed, headway for every vehicle.

This in-depth level of detail enables MTE to produce a variety of traffic reports. To maximise the software's power, we developed the **Custom List Report** analysis tool.

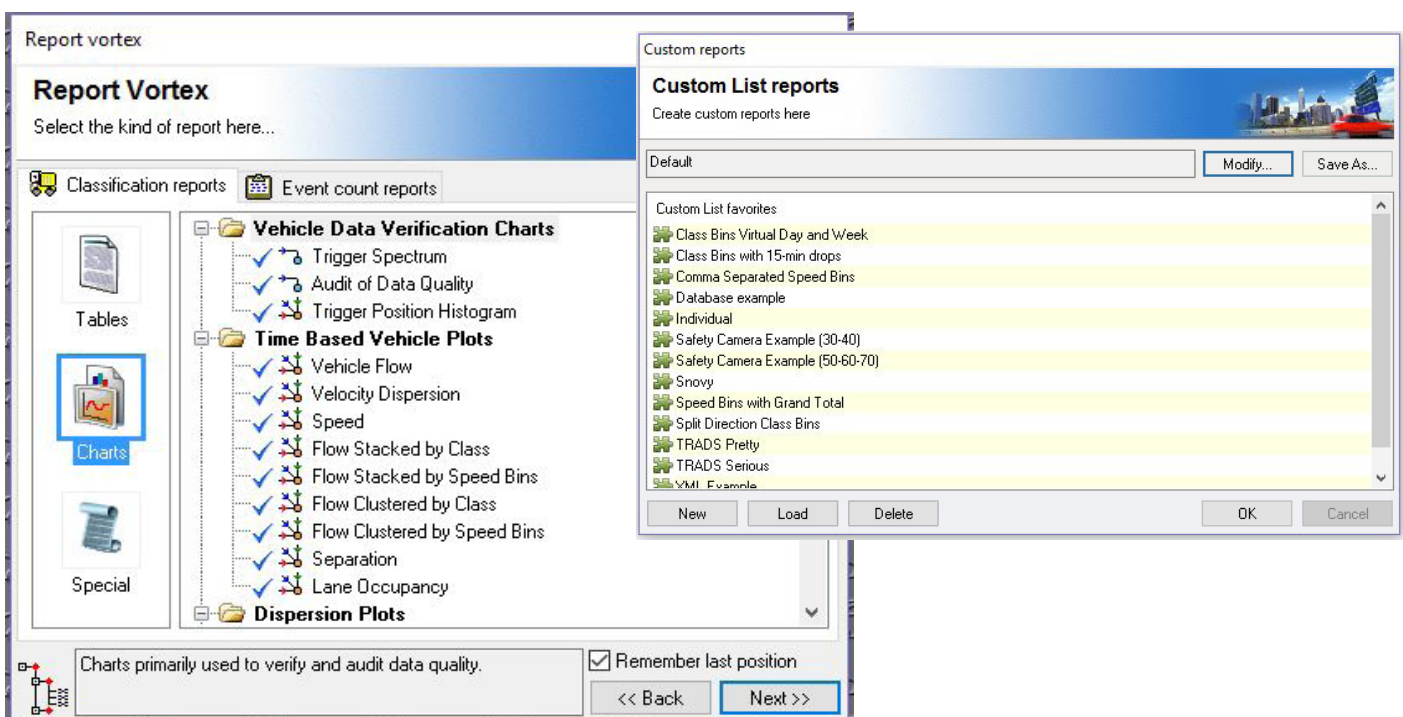
The Custom List Report allows you to construct your own time-series text reports, from an

array of traffic parameters and formatting options. Once you've designed your Custom List, you can save the template for reuse. By changing the formatting, you can quickly alter a human-readable report into a one that's readily transferable to other software applications, such as Excel.

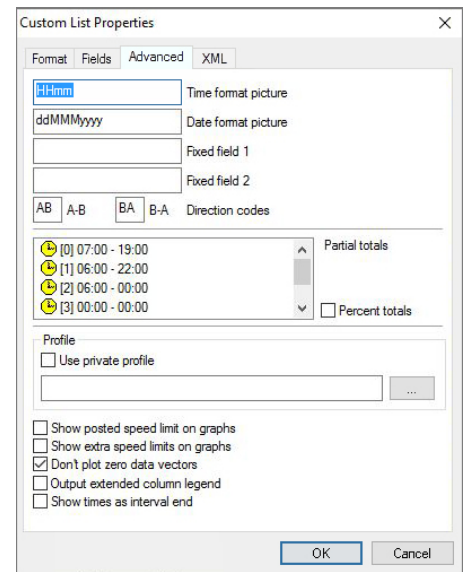
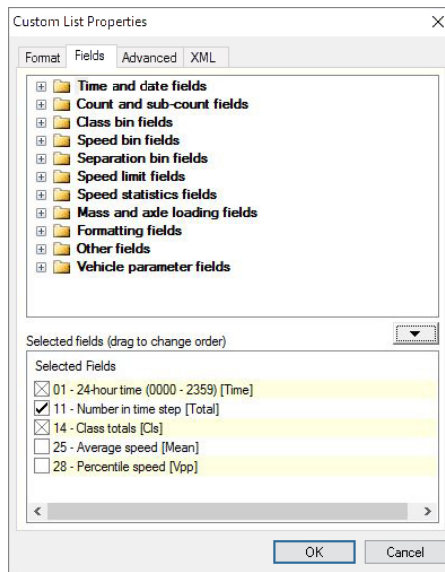
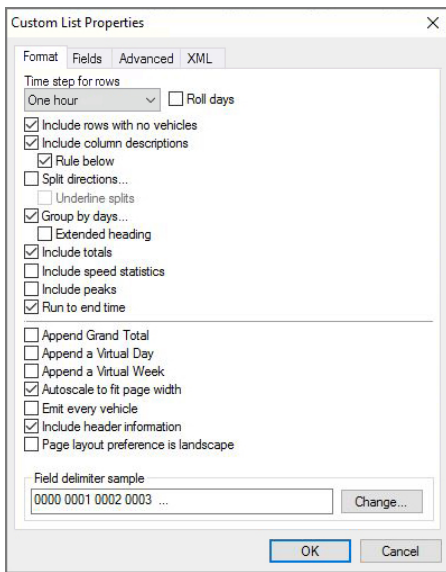
Careful selection of parameters and formatting options provides other software developers with great flexibility. Creating your own custom database applications, for example, or transferring data to a spreadsheet in .xml format are very easy tasks in MTE.

Creating a Custom List Report

1. Start by clicking the **New Report > Next** buttons and from the Report Vortex, select the Custom List Report and click **Next**.
2. Verify that your report's profile is correct, make the required changes and click **Next**.
3. You arrived at the Custom List Favorites window. Select the predefined options you need or create a new template by clicking the **Modify...** button.

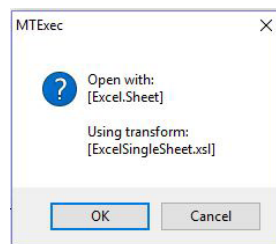
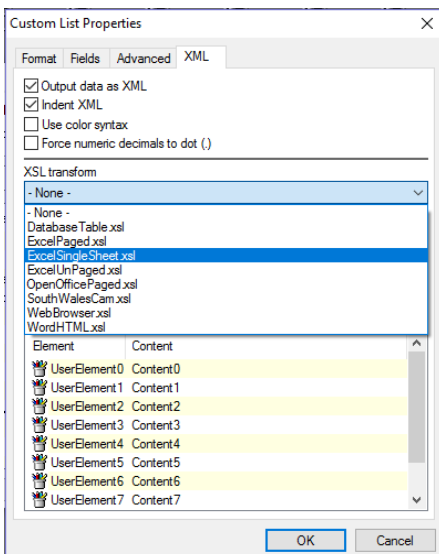


- The *Format* tab allows you to change general settings: data time steps (from 5 minutes to 24 hours), days groups, split direction, etc.
- The *Fields* tab enables you to choose the traffic parameters you'd like to include in your analysis. Double-click **Available fields** and **Selected fields** to swap parameters. Drag **Selected fields** to change their order across the report's columns.
- Click the *Advanced* tab to modify data display fields, such as Date and Time format or Partial and Percent totals, Direction codes, etc.



Producing a Custom List XML report and transferring it to Excel

- Create a new Custom List Report.
- Arrange your data, select the *XML* tab and toggle the *XML output* check box. Select the *XLS transform to Excel Sheet.xls*.
- Select the Tools menu > Transform, Save and Open. Click OK.



Saturday, 20 March 2015														Mean	Vpp	
Time	Total	Cls 1	Cls 2	Cls 3	Cls 4	Cls 5	Cls 6	Cls 7	Cls 8	Cls 9	Cls 10	Cls 11	Cls 12			
1200	133	127	4	2	0	0	0	0	0	0	0	0	0	0	76.8	86.6
1300	212	197	8	5	0	0	1	0	0	1	0	0	0	0	76.5	86.1
1400	180	171	5	2	1	0	0	0	0	1	0	0	0	0	82.4	89.7
1500	160	157	1	2	0	0	0	0	0	0	0	0	0	0	84.5	93.6
1600	186	181	2	3	0	0	0	0	0	0	0	0	0	0	82.4	91.6
1700	199	187	1	1	0	0	0	0	0	0	0	0	0	0	83.2	89.9
1800	119	114	4	1	0	0	0	0	0	0	0	0	0	0	78.4	88.2
1900	100	97	1	0	1	0	0	1	0	0	0	0	0	0	79.7	88.7
2000	63	60	0	0	1	0	0	0	0	0	2	0	0	0	77.9	85.7
2100	85	85	0	0	0	0	0	0	0	0	0	0	0	0	76.9	85
2200	96	94	1	1	0	0	0	0	0	0	0	0	0	0	77.8	84.2
2300	64	64	0	0	0	0	0	0	0	0	0	0	0	0	73.4	82.5
07:19	1179	1134	25	16	1	0	1	0	0	2	0	0	0	0	80.7	88.5
06:22	1427	1376	26	16	3	0	1	1	0	4	0	0	0	0	80.3	89.1
06:00	1587	1534	27	17	3	0	1	1	0	4	0	0	0	0	79.9	88.8
00:00	1587	1534	27	17	3	0	1	1	0	4	0	0	0	0	79.9	88.8