

### MetroCount Support for ROMAN II

The MetroCount 5600 Vehicle Classifier System (MC5600) is the dominant instrument used throughout WA for undertaking short term traffic surveys. After gathering traffic data, MC5600 datasets are processed with MetroCount Traffic Executive (MTE) software to produce a variety of traffic reports.

MetroCount have developed a Custom List template for use with MTE version 3.21 that is specifically compatible with ROMAN II, supporting automatic traffic data upload to RAMM.

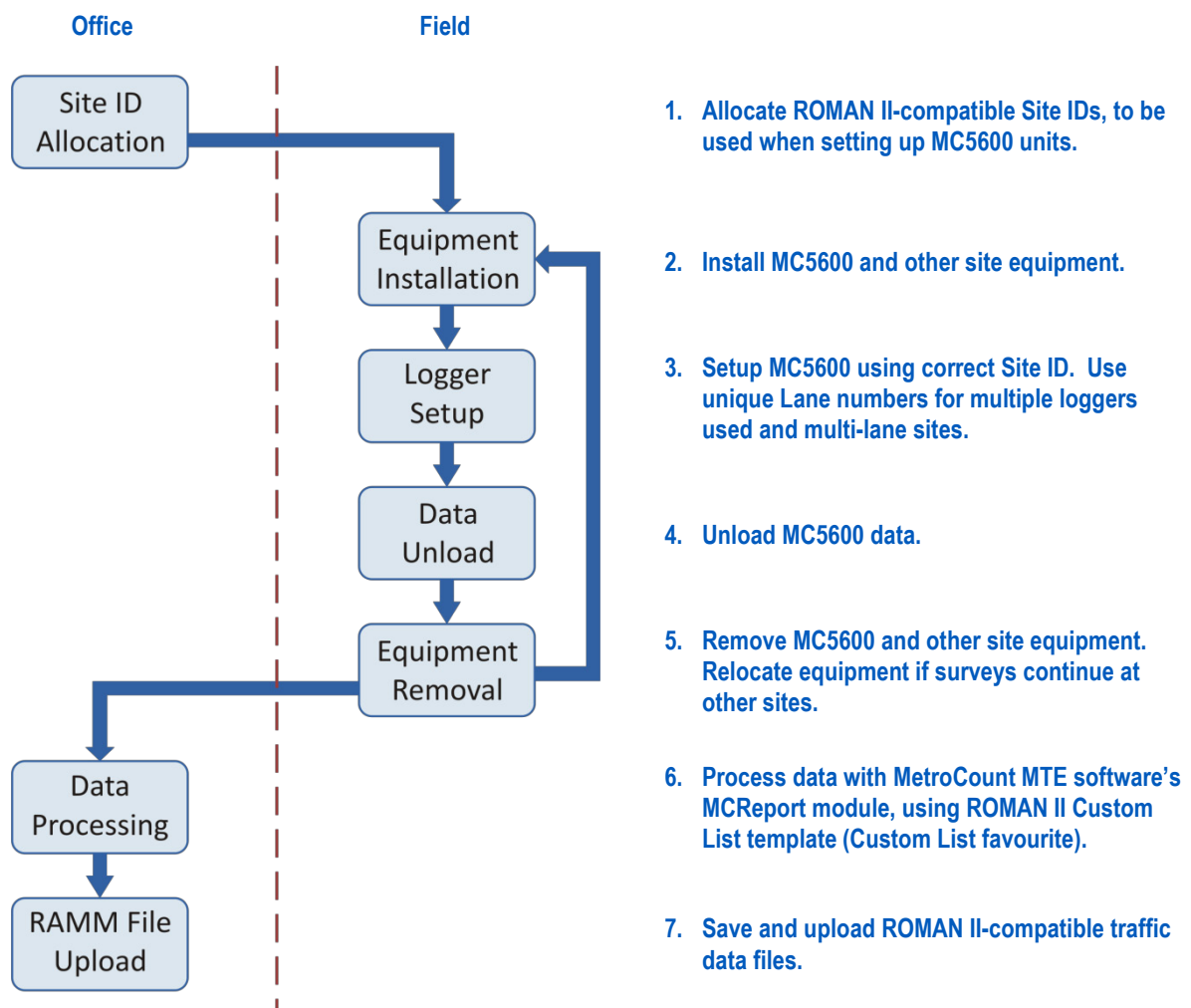


Note: Operating the MC5600 system and its associated software is considered beyond the scope of this document. For further information on the MC5600 system and the MTE software, please contact MetroCount directly on 9430 6164, or visit the company's website at: [www.metrocount.com](http://www.metrocount.com).

At the time of writing, MetroCount are continuing their policy of providing the latest MTE software version upon request. To check whether you have the latest software, or to request another copy, contact MetroCount directly on 9430 6164, or visit the company's website at: [www.metrocount.com](http://www.metrocount.com).

### Process Summary

The following diagram provides an overview of data gathering with the MC5600 and processing with MTE to generate and upload traffic data compatible with RAMM.



## ROMAN II-Compatible MetroCount Site ID

The MetroCount Site ID field is used by RAMM to identify and upload traffic survey results.

The format is strictly as follows:

**nnn\_XXXXXX\_yyyyyy**

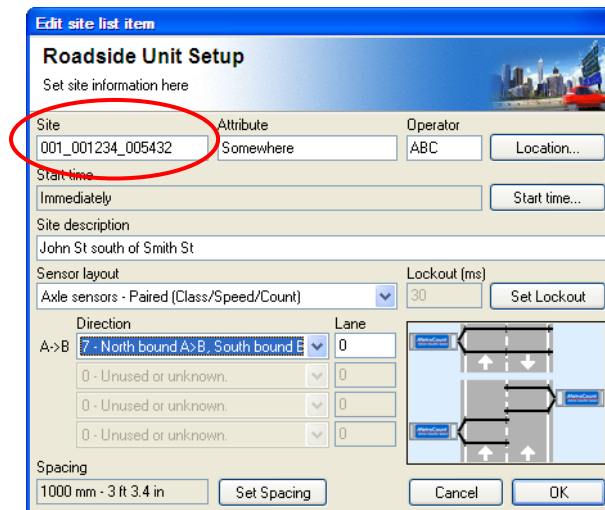
Where:

- **nnn** is the three digit LGA number.
- **XXXXXX** is the six digit road number, and
- **yyyyyy** is the six digit SLK reference for the survey location.

Note: 1. The underscore character “\_” separating the above fields is required.

2. All fields must be zero filled if less than six digits (eg 00123).

The Site ID is entered into MC5600 vehicle classifiers during setup of the roadside unit.



In this example...

001 LGA number (3 digits)  
 001234 Road number (6 digits)  
 005432 SLK reference (6 digits)

MetroCount 5600 roadside unit setup screen

Note: At survey sites with multiple lanes, setup ALL MetroCount roadside units with the same Site ID but with a unique Lane number for each unit. This is to ensure a unique file name for all input files (see MetroCount documentation for further details).

## Data Processing with the MetroCount “ROMAN II” Custom List

The ROMAN II Custom List template comprises two files:

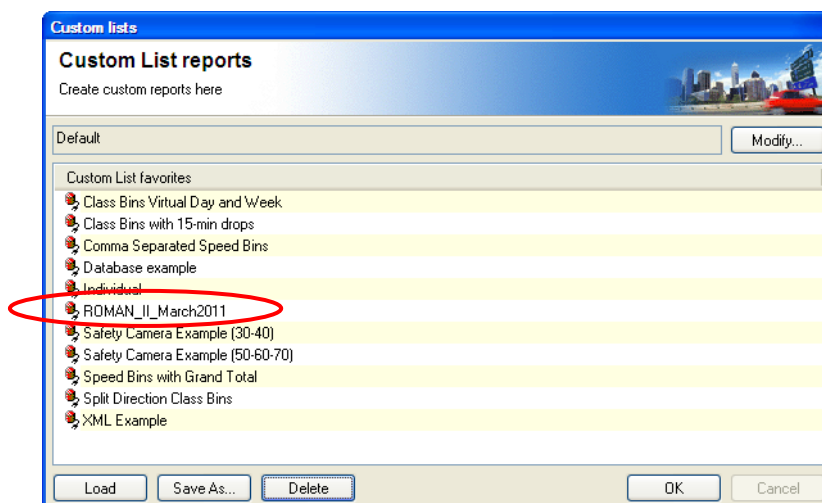
- **ROMAN\_II\_March2011.xpt** – The MTE template definition file, and
- **ROMAN\_II\_March2011.ini** – The MTE report profile file containing traffic filter and other report settings.

These files are available from: [www.metrocount.com/downloads/roman2](http://www.metrocount.com/downloads/roman2)

During the installation of MTE, a folder, **MetroCount\MTE 3.21\Profiles**, is created as a subfolder of the current user’s Windows document folder. The two ROMAN II Custom List files must be copied to the folder, eg:

**C:\UserName\My Documents\MetroCount\MTE 3.21\Profiles**

After copying these files, restart MTE's MCRReport module. If correctly copied and installed, the ROMAN II template will appear as a MetroCount Custom List favourite:



ROMAN II report appearing as MetroCount Custom List template

MetroCount files are processed using the ROMAN II Custom List favourite, which will load the appropriate filter settings:

- Complete days starting and ending at midnight.
- Austroads 94 Vehicle Classification Scheme.
- Vehicle classes 1 to 12.
- Speed range 5 – 160 km/h.
- All available traffic flow directions.
- All separations (i.e. no headway filtering.)
- Metric units.

The ROMAN II Custom List will generate a traffic survey summary. To save the report in MCRReport, choose “**File > Save report as...**” This summary must be saved in “**Plain text format ANSI (\*.txt)**” format.

The ROMAN II traffic survey summary reports will be saved in the **MetroCount\MTE 3.21\Output** folder.

---

WARNING: Do not change the default output file name.

---

Further notes on data processing:

- All files from multiple lane surveys may be processed as a group. Load and tag multiple metrocount datasets as required. The result will be one output file with all data combined across multiple lanes.
- Apart from checking for valid file format, the RAMM upload module performs no data quality checks. Therefore, it is imperative that only acceptable and complete data is uploaded, following the validation procedures as recommended by MetroCount.