

Supplied with...



MetroCount  
Traffic Executive  
software

P  
O  
R  
T  
A  
B  
L  
E  
I  
N  
S  
T  
A  
L  
L  
A  
T  
I  
O  
N  
S

## MetroCount 5710 Configurable Roadside Unit

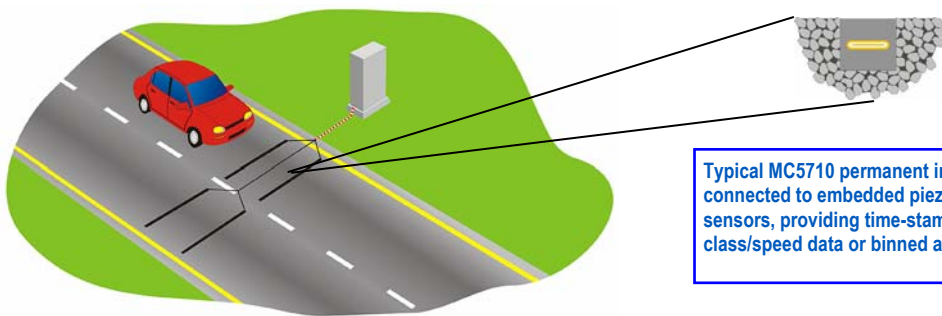
The **MetroCount 5710** is a four-input Roadside Unit, arranged as two channels configured for either:

- Time-stamping, for class, speed and volume;
- Binned counts, of 1, 5, 15 or 60 minutes; or
- Analog time-series, with two voltage ranges.

With external sensors, the MetroCount 5710 can be used for portable applications, or simply slot the unit into existing or new permanent sites.

The MetroCount 5710 supports a variety of sensors, including:

- Piezo-electric sensors;
- Contact closure or opto-isolator;
- Sensors with pulse output;
- Analog voltage.



Typical MC5710 permanent installation connected to embedded piezo-electric axle sensors, providing time-stamped vehicle class/speed data or binned axle counts.

Four-input, two channel RSU

Portable applications

Permanent installations

Fully programmable input

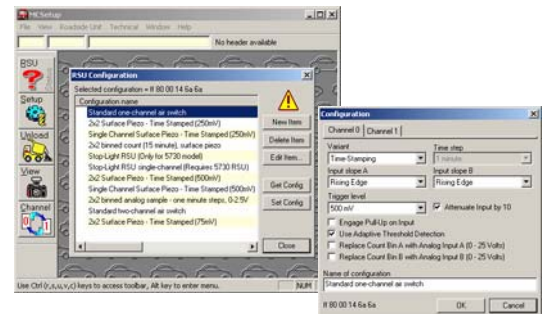
Compatible with MetroCount Traffic Executive software

### MetroCount's Traffic Executive software included!

Like our other traffic monitoring systems, we include our world-leading Traffic Executive software package with the MetroCount 5710 logging hardware at no extra cost.

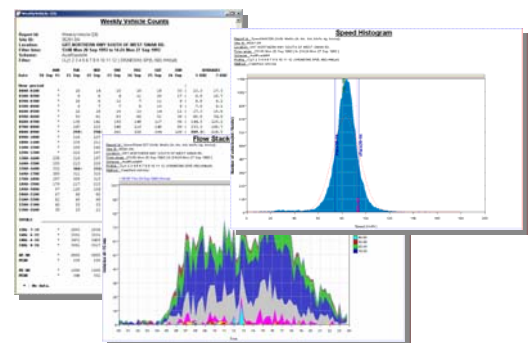
Each channel is software configurable, and features:

- Peak detection with adaptive threshold;
- Rising or falling edge detection;
- Adjustable sensitivity;
- Adjustable digital debounce filtering;
- Internal pull to supply or ground;
- Protection to 8kV ESD or >300V continuous.



The MetroCount 5710 integrates seamlessly into the MetroCount Traffic Executive Environment...

- All features field programmable, using a mobile PC;
- Compile a database of favourite configurations;
- Configurations can be locked, preventing accidental change or deletion;
- Setup each channel independently, using the intuitive software interface;
- Configurations tracked in data reports;
- Data types can be mixed in Event Count reports;
- Convert time-stamped data into binned counts



### MetroCount

**Australia**  
P.O. Box 1182  
Fremantle WA 6959  
Ph: 08 9430 6164  
Fax: 08 9430 6187  
Email: sales@metrocount.com

**United Kingdom**  
Unit 29, Rosemont Road  
Wembley, Middlesex  
London HA0 4PE  
Ph: 020 8782 8999  
Fax: 020 8782 8737  
Email: uksales@metrocount.com

**United States**  
18200 Georgia Ave, Suite J  
Olnsey MD 20832  
Ph: 800 576 5692  
Fax: 866 440 8407  
Email: usasales@metrocount.com

www.metrocount.com

## MetroCount 5710 Configurable Roadside Unit

Technical Specification	
Operating Temperature Range	-10C to 60C
Operating Voltage	6 – 12 volts. Protected to 40V and supply reversal
Operating Current	Less than 1.9mA, typically 1.6mA
Idle Current	Less than 80µA, 55µA typical
Supplied Battery	Pack of 4 D-cells, alkaline
Operating Life	About 290 days with standard pack
Number of Channels	Two independent
Inputs per Channel	2
Storage	Either time stamped or binned
Total Memory	2Mbyte (memory is split if both channels are active)
Time-stamp Resolution	Less than one millisecond
Bin Width	One, five, 15 or 60 minutes
Bin Size	Max count 65534 (16-bit)
Maximum Defer Time	Ten days in Time Stamp Mode, disabled in Bin Mode
Power Saving	Unit drops to idle state if no triggers occur for one week (disabled in Analog Mode)
Analog Input Range	Lo-Range 0-2.5V or Hi-Range 0-25V
Analog Bandwidth	<10Hz
Analog Accuracy	+/-1% of full scale
Analog Resolution	256 levels (8-bit)
Trigger Types	Rising Edge, Falling Edge, Both Edges
Trigger Levels	Lo-Range 25, 50, 57, 100 millivolts or Hi-Range 250, 500, 750, 1000 millivolts
Trigger Accuracy	+/-5% of trigger level
Digital Debounce	5ms to 300ms
Input Bias	Weak pull-up to 5V on Hi-Range, 2.5V on Lo-Range or pull-down to ground
Input Impedance	1 MOhm on Lo-Range, 500 KOhm on Hi-Range
Impedance Accuracy	+/-5%
Reference	All inputs share a single common point
ESD Immunity	CE 8KV transient
Maximum Input	300V continuous
Maximum Count Rate	200Hz burst, 100Hz sustained (each channel)
Maximum Pulse Width	100µs
Interchannel Crosstalk	>30dB

[www.metrocount.com](http://www.metrocount.com)

[sales@metrocount.com](mailto:sales@metrocount.com)

Australia  
P.O. Box 1182  
Fremantle WA 6959  
Ph: 08 9430 6164  
Fax: 08 9430 6187  
Email: sales@metrocount.com

United Kingdom  
Unit 29, Rosemont Road  
Wembley, Middlesex  
London HA0 4PE  
Ph: 020 8782 8999  
Fax: 020 8782 8737  
Email: uksales@metrocount.com

United States  
18200 Georgia Ave, Suite J  
Oliney MD 20832  
Ph: 800 576 5692  
Fax: 866 440 8407  
Email: usasales@metrocount.com